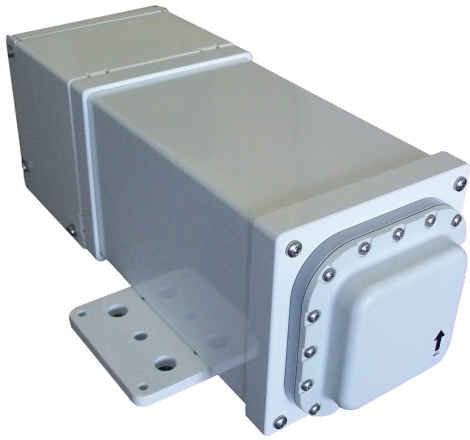


Dart UWB Vision Reader



SEE MORE. DO MORE.



Product Features

- **Long Range Active RFID** — Up to 200 meters (650 feet)
- **High Tag Throughput** — Thousands of tags per second capacity
- **Adjustable Range** — 30 cm (1 ft) up to 200m (650 ft)
- **Easy Installation** — Standard connectivity: 10/100 Ethernet, POE, Wi-Fi (802.11BG); multiple Reader daisy-chain capabilities
- **Global Acceptability** — US (FCC) and EU (ETSI) certified.
- **Robust UWB RFID** — Excellent detection in high multi-path, difficult environments
- **Weatherproof Enclosure** — IP67 for indoor and outdoor applications

Dart Vision Reader

The Dart Vision Reader provides robust presence detection for inventory and personal access control. Utilizing patented short-pulse, Ultra-Wideband (UWB) technology, the Dart Vision Reader offers a detection level that exceeds the capabilities of other Radio Frequency Identification (RFID) technologies. The Dart Vision Reader portfolio offers three standard integrated antenna models (High-Gain, Mid-Gain and Omni) to optimize the desired presence detection footprint. Each Reader can simultaneously receive thousands of signals emitted by Zebra's active UWB DartTags with a read range upwards of 650 ft with the High-Gain model.

The Dart Vision Reader can be used either as a stand-alone solution or as the perfect complement to the Dart UWB Real Time Locating System (RTLS). The Reader is fully weatherproof (IP67 rated) with an operational temperature range of -40°C to +55°C. Combined with the DartTags ability to be detected in high multi-path, metallic environments, the Dart Vision Reader is able to handle the most difficult, indoor and outdoor industrial environments.

The Dart Vision reader is powered by standard IEEE 802.3af Power-over-Ethernet (PoE). The reader supports the transport of the received DartTag messages via Ethernet or integrated 802.11 b/g Wi-Fi client capability (Wi-Fi antennas sold separately). This data is in an easy to use format for further integration into RFID edgware solutions available from Zebra and a variety of vendors.

The Dart Vision Reader offers unique features that greatly enhance the ability to implement a robust RFID solution. The Reader provides software enabled attenuation allowing the creation of localized presence zones by dialing in the read range from inches to hundreds of feet with clear line of sight (LOS). A Dart Vision Reader also has the capability to be daisy-chained to another Vision Reader (and up to another two Readers with additional POE injection) providing data via one Ethernet or Wi-Fi connection. This is a great advantage for those applications where multiple readers will improve reading robustness or extend the range of presence detection capability without the need to expand the IT network.

The Dart Vision Reader is the proven choice for exceptional inventorying of critical assets and personnel in demanding industrial, manufacturing, supply chain and badging applications.



Dart Vision Reader Specifications

Model UWD-1000-A-XXAA

Models	
Name	Part Number
Dart Vision Reader w/ High-Gain Antenna	UWD-1000-A-01AA
Dart Vision Reader w/ Mid-Gain Antenna	UWD-1000-A-02AA
Dart Vision Reader w/ Omni-Directional Antenna	UWD-1000-A-03AA
Performance	
Frequency Range (-10dB)	6.35 to 6.75 GHz
Antenna Gain	<ul style="list-style-type: none"> UWD-1000-A-01AA (High-Gain): 13.8 dBi UWD-1000-A-02AA (Mid-Gain): 6.5 dBi UWD-1000-A-03AA (Omni): 5.0 dBi
Environmental/Physical/Power	
Operating Temperature	-40°C to +55°C (-40°F to +131°F)
Environmental Sealing	IP67 (Dust & Direct Water Spray Protection)
Length (w/ Drip Shield)	<ul style="list-style-type: none"> Mid & High-Gain: 27.9 cm (11.0 in) Omni: 38.1 cm (15.0 in)
Width (w/ Mounting Bracket)	17.1 cm (6.75 in)
Height (w/ Mounting Bracket)	10.8 cm (4.25 in)
Weight	2.6 kg (5.8 lbs)
Power Consumption	Standard POE 802.3af (37-57 VDC)
Power Supply	<ul style="list-style-type: none"> 802.11af PoE Injector, 100-240 VAC, Up to 100 m Ethernet cable Also commonly supplied by Customer 802.3af network switch, Up to 100 m Ethernet cable
Communications	
Ethernet	10/100 BaseT, CAT5 Jack, IEEE 802.3af compliant
Wi-Fi	<ul style="list-style-type: none"> IEEE 802.11 b/g, antenna ordered separately Transmit Frequency Band: 2400-2483.5 MHz Transmit Power: 20 dBm EIRP
Configuration & Diagnostics	<ul style="list-style-type: none"> Direct connection via Serial Port, RS-232, with adapter cable Telnet/ Secure Shell 2 via TCP/IP Ethernet interface
Regulatory Approvals	
<ul style="list-style-type: none"> FCC Part 15 subpart B & C; ICES-003, UL60950-1, UL60950-22; CAN/CSA-22.2 No. 60950-1-07, CAN/CSA-22.2 No. 60950-22 CE, EN 300 328, EN 301 489-17, EN 60950 1 	
Accessories	
Name	Part Number
Wi-Fi Antenna – Indoor/Outdoor Omni-Directional, 5.2 dBi	AK-151-00
Wi-Fi Antenna – Indoor/Outdoor Directional, 13.5 dBi	AK-153-00
Wi-Fi Antenna – Indoor Omni-Directional, 2.2 dBi	AK-170-00
IEEE 802.3af Power over Ethernet (PoE) Injector	EP-025-00
Mounting Arm – Dart Vision Reader	UM-120-00

Specifications subject to change without notice.



www.zebra.com

Corporate Headquarters
 +1 800 423 0442
 Email: inquiry4@zebra.com

Asia-Pacific Headquarters
 +65 6858 0722
 Email: apacchannelmarketing@zebra.com

EMEA Headquarters
 +44 (0)1628 556000
 Email: mseurope@zebra.com

Latin America Headquarters
 +1 847 955 2283
 Email: inquiry4@zebra.com

Other Locations

USA: California, Georgia, Illinois, Rhode Island, Texas, Wisconsin **Europe:** France, Germany, Italy, the Netherlands, Poland, Spain, Sweden, Turkey, United Kingdom **Asia Pacific:** Australia, China, Hong Kong, India, Japan, Malaysia, South Korea, Singapore, Thailand **Latin America:** Brazil, Florida (LA Headquarters in USA), Mexico **Africa/Middle East:** Dubai, South Africa

